

All 316L Stainless Steel  
Pressures to 150 psig  
Various End Connections

## Series FDA800 THERMODYNAMIC CLEAN STEAM TRAP

### Applications

The FDA800 Disc Trap is designed to remove condensate and air automatically from steam lines. Freeze-proof design can be easily achieved by following the simple installation (*see back side of page*). Typical uses are:

- Main drips
- WFI system sterilization

### Features

- All 316L Stainless steel construction
- Available in numerous connection configurations
- Excellent capability for handling light to medium loads
- Works efficiently in any position
- Snap-opening provides purging action in unit being drained
- Compact for easy installation
- Three individually-ported outlet holes assuring vertical lift of disc is parallel to the seat, thus eliminating any rubbing or tilting of disc
- One moving part assures low-maintenance

### How It Works

The Disc Trap uses the higher kinetic energy of flash steam over water to close the trap with static pressure. As condensate enters the trap, it simply lifts the disc and flows through one of three individually-ported outlet holes. The three outlet holes assure the vertical lift of the disc is parallel to the seat so no rubbing or tilting of disc is possible. When condensate temperature gets close to steam temperature, the condensate starts to flash over into steam after it enters the trap. This flash steam flows with a higher velocity (*under the disc*) lowering the pressure under the disc. The higher pressure on top of the disc snaps the disc closed. When the flash steam trapped above the disc condenses, the cycle is repeated.



CLEAN STEAM  
PRODUCTS

Watson McDaniel reserves the right to change the designs and/or materials of its products without notice



### WATSON MCDANIEL COMPANY

975 Madison Ave. Valley Forge Corporate Center Norristown, PA 19403  
[www.watsonmcdaniel.com](http://www.watsonmcdaniel.com) 610 666-5711 Fax 610 666-0404

Manufacturers of:

**PRESSURE & TEMPERATURE REGULATORS - RELIEF VALVES - STEAM TRAPS - CLEAN STEAM PRODUCTS  
LIQUID DRAINERS - PRESSURE PUMPS - EJECTORS - SPECIALTY PRODUCTS**



ASME Sect VIII Div I  
ST-505

# FDA800 Thermodynamic Clean SteamTrap Specifications

## Materials

Body .....Stainless Steel, AISI 316L  
 Disc .....Stainless Steel, AISI 316L  
 Cap .....Stainless Steel, 316L

## Maximum Operating Conditions

Max. Operating Pressure (PMO).....150 psig  
 Max. Operating Temperature (TMO).....850° F

## Design Pressure/Temperature Rating

Max. Allowable Pressure (PMA).....230 psig  
 Max. Allowable Temperature (TMA).....850° F

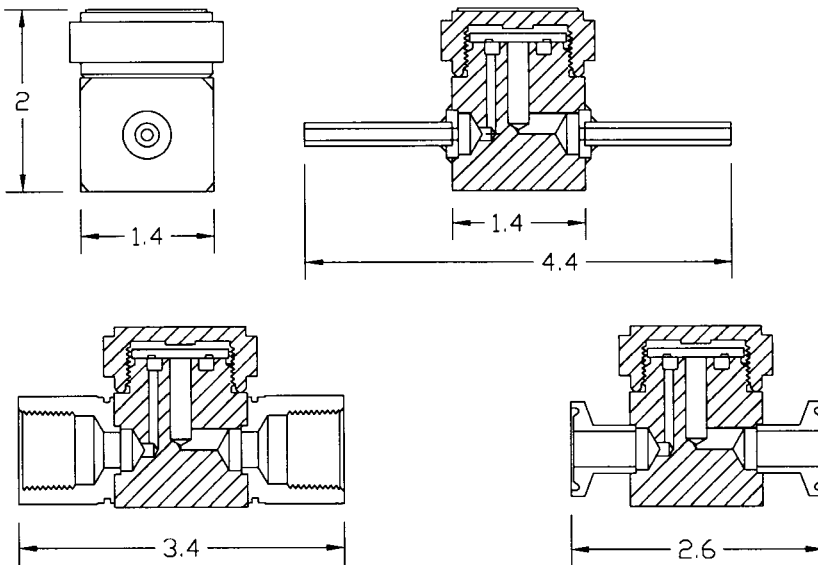
## Dimensions & Weights

1/4", 3/8" Tube Weld.....1.25lbs  
 1/2" NPT & TC.....1.5 lbs.

## Capacities – lbs. of condensate/hr

Inlet (psig)	3/8" 1/2"	1/4"
3.5	180	40
5	185	50
10	190	70
15	195	80
20	200	95
25	215	105
30	220	115
40	230	135
50	250	150
75	310	180
100	375	195
150	500	225

Note: Maximum back pressure not to exceed 80% of inlet pressure.



## Typical Installation

