

All Stainless Steel Internals  
Carbon Steel Body

## Series WLD600 Float Type Drainer

### Applications

Series WLD600 Float Type Drainers provide immediate and continuous discharge of large amounts of Liquids. These Drainers meet capacity drainage needs required for Draining liquids from air or other gases in process applications. High pressure design for heavy industrial applications such as Hydrocarbon drainage.

### Features

- All Stainless Steel internals-for long life service
- Adjusts to pressure and load variations instantaneously
- Carbon steel body & cover
- Rugged construction designed for heavy industrial applications
- In-line repairable - Studded cover for one man in-line field repair.
- Available in all Stainless Steel as Series WLD601

### How It Works

This is a modulating-type drainer with the main valve actuated by a float. The amount of liquid flowing to the trap is sensed by the float which, in turn, positions the main valve to discharge liquid at the same rate as it is received.

The lever or stem is guided in each series to assure proper valve seating and protection against any horizontal movement from the liquid turbulence.



LIQUID DRAIN  
TRAPS

Watson McDaniel reserves the right to change the designs and/or materials of its products without notice



## WATSON McDANIEL COMPANY

975 Madison Ave. Valley Forge Corporate Center Norristown, PA 19403  
[www.watsonmcdaniel.com](http://www.watsonmcdaniel.com) 610 666-5711 Fax 610 666-0404

Manufacturers of:

**PRESSURE & TEMPERATURE REGULATORS - RELIEF VALVES - STEAM TRAPS - CLEAN STEAM PRODUCTS  
LIQUID DRAINERS - PRESSURE PUMPS - EJECTORS - SPECIALTY PRODUCTS**



# WLD600 Specifications

## Capacity Correction Factors

To obtain capacity with a liquid other than water, multiply water capacity by correction factor

S.G.	1	.98	.96	.94	.92	.90	.88	.86	.84	.82	.80	.75	.70	.65	.60	.55	.50
Corr Factor	1	.990	.980	.970	.959	.949	.938	.927	.917	.906	.894	.866	.837	.806	.775	.742	.707

## Sample Specification

Liquid Drainers shall be of the mechanical float type having Cast Steel Bodies, horizontal in-line connections in NPT, S.W, or flanged, and all stainless steel internals. The Drainer will be in-line renewable.

## Pressure Shell Design Limits

All Models  
 Class 400  
 Max Allowable Pressure(PMA).....670PSIG @ 750 F  
 Max Allowable Temperature(TMA).....750 F @ 670PSIG

## Operating Conditions

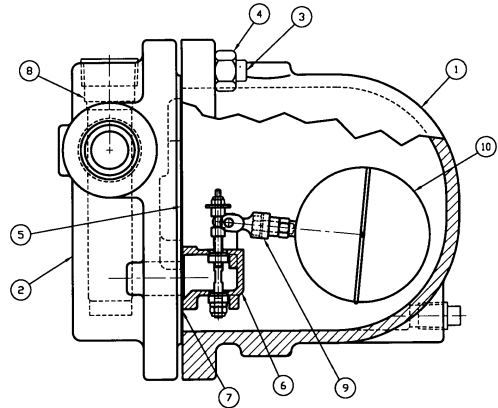
Max. Operating Pressure (PMO)

WLD600-65.....	65PSIG
WLD600-145.....	145PSIG
WLD600-200.....	200PSIG
WLD600-300.....	300PSIG
WLD600-450.....	450PSIG

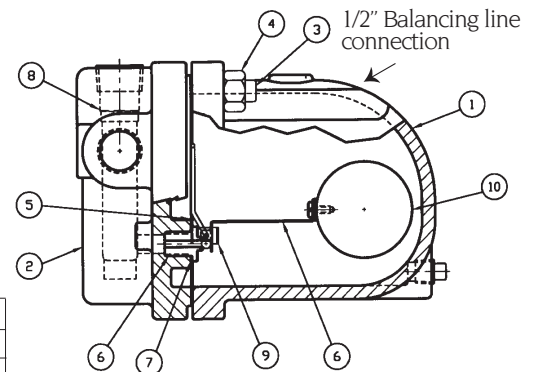
## Construction Materials

No.	Part	Material	Type
1	Body	Cast Steel (Note)	ASTM A-216 WCB
2	Cover	Cast Steel (Note)	ASTM A-216 WCB
3	Cover Studs	Steel	SA 193,GR B7
4	Cover Nuts	Steel	SA 194,GR 2H
5	Cover Gasket	S.S Reinforced Grafoil	
6	Valve Seat (3/4" & 1") Main Valve Ass'y(1 1/2" & 2")	Stainless Steel Stainless Steel	ASTM A276 Type 420 AISI 431
7	Gasket, Valve Seat(3/4" & 1") Gasket, Valve Ass'y(1 1/2" & 2")	Monel S.S Reinforced Grafoil	
8	Erosion Deflector	Stainless Steel	ASTM A-240 Type 304
9	Pivot Assembly(3/4" & 1") Mounting Screws Pivot Assembly(1 1/2" & 2") Mounting Screws	Stainless Steel 10-32 Panhead/S.S Stainless Steel 5/16"-18" Hex Head/S.S	ASTM A-240 Type 304 18-8 17-4 PH 18-8
10	Float	Stainless Steel	ASTM A-240 Type 304

Note: Available in all 316 Stainless Steel, ASTM A351 CF3M (WLD601)



**1 1/2" & 2" WLD600**

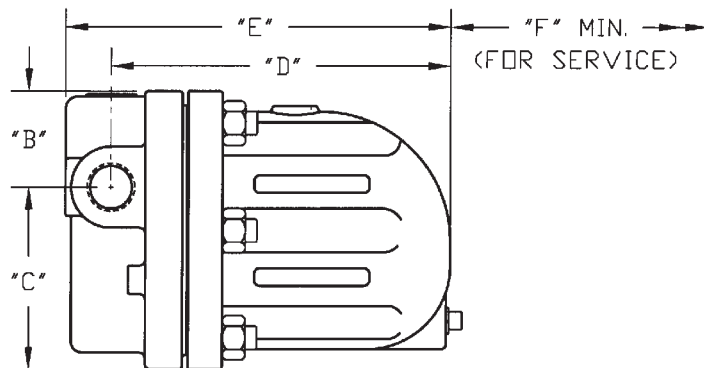
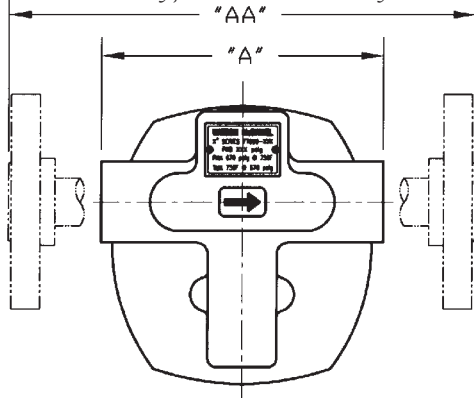


**3/4" & 1" WLD600**

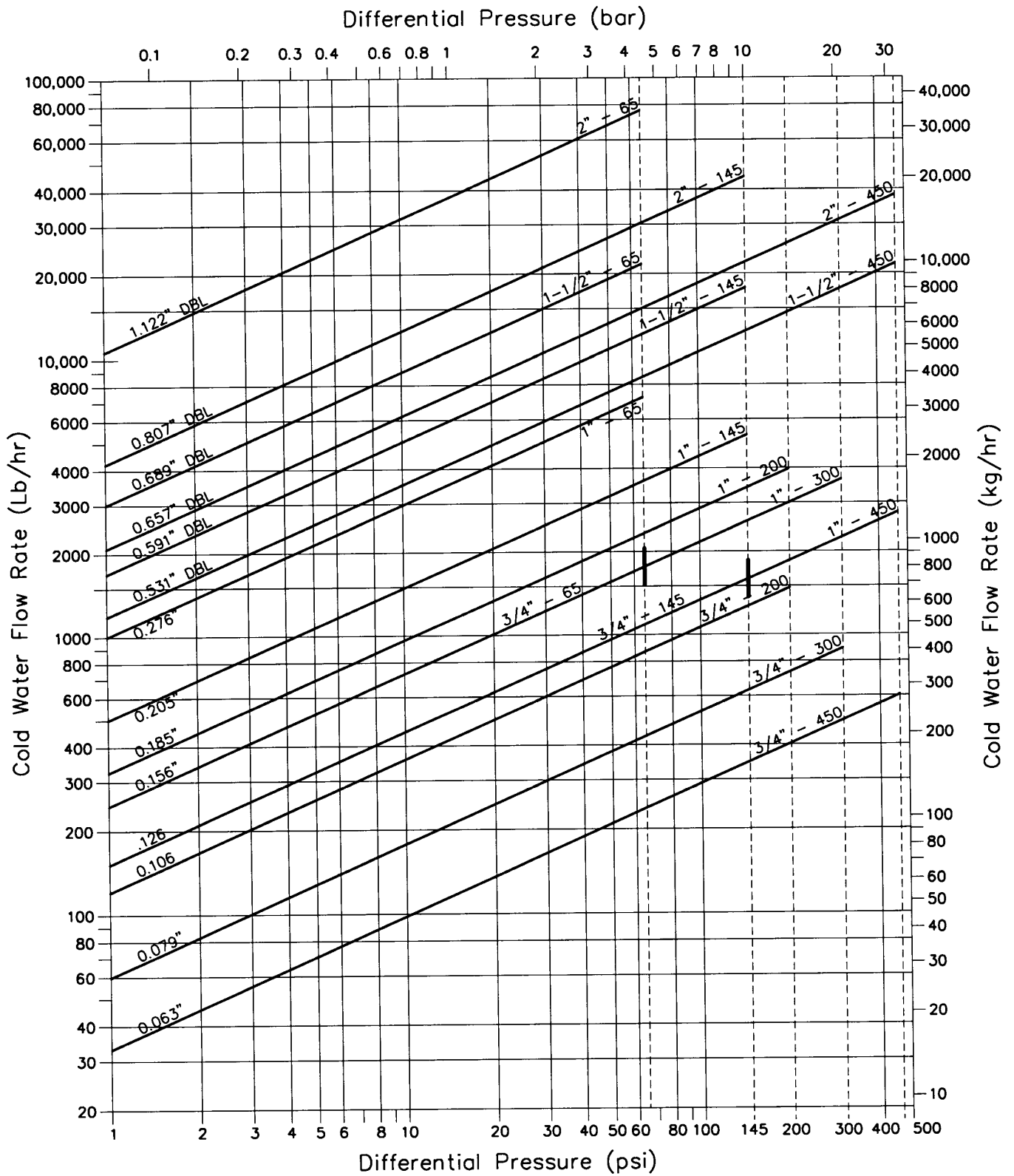
## Dimensions

Trap Size	Dimensions(inches)							WT.(lbs.)	
	A	AA	B	C	D	E	F	NPT/SW	FLG
3/4" WLD600	6.10	10.10	2.07	3.93	7.38	8.41	5.75	25	31
1" WLD600	6.50	10.40	2.50	5.50	8.44	9.50	6.25	31	36
1 1/2" WLD600	9.80	14.00	3.26	8.97	10.40	11.94	7.75	82	91
2" WLD600	11.80	16.00	3.60	7.40	11.59	13.27	6.75	93	107

Consult Factory for Socket Weld & Flange Connections



# Liquid Capacities, WLD600 Float Type Drainers



DBL: Diameter of each orifice in a double-seated trap.

LIQUID DRAIN TRAPS