

## All Stainless Steel Mechanism Steel Non-Electric Pump Up to 200 psig

## Series PMPHP PRESSURE MOTIVE PUMP

PRESSURE  
MOTIVE PUMPS

### Applications

The Pressure Motive Pump (PMPHP) is recommended when liquids must be moved to a higher elevation, higher pressure, or great distances. Typical applications are:

- Condensate from Vacuum or Low Pressure Systems
- Condensate Systems with High Back Pressure
- Any Steam Condensing Equipment (i.e., Heat Exchangers, Condensers, Turbines)
- Remote Installation (i.e., Tank Farms)
- Where Electricity is Prohibited (i.e., some underground steam distribution systems, tank farms, etc.)
- Submersible, Hard-To-Get-At Areas

### Features

- Compression Spring design for longer life
- Vent Valve & Gas Supply Valve & Seat are Hardened Stainless Steel
- Energy-Saving — up to 25% over conventional pumps
- Handles flashing condensate without cavitation problems or the need for cooling water
- Carbon Steel ASME code stamped Pump Housing to 200 psig
- All Stainless Steel Internals for better corrosion resistance

### How It Works

The Series PMPHP uses a spring-loaded mechanism inside a pump body to control liquid removal. When the pump is starting to fill through the inlet check valve the float is in the low level position which opens the vent valve at the top and closes the motive gas (steam or air) supply valve.

When the spring-loaded mechanism reaches the trip point and snaps over the center, the vent valve closes and the gas supply valve opens simultaneously. As the liquid in the body is pumped out through the outlet check valve, the float starts to drop. When the float reaches the switch point, the mechanism snaps over the center, the gas supply valve closes, and the vent valve opens, allowing the filling process to repeat.



Watson McDaniel reserves the right to change the designs and/or materials of its products without notice



### WATSON McDANIEL COMPANY

975 Madison Ave. Valley Forge Corporate Center Norristown, PA 19403  
[www.watsonmcdaniel.com](http://www.watsonmcdaniel.com) 610 666-5711 Fax 610 666-0404

Manufacturers of:

**PRESSURE & TEMPERATURE REGULATORS - RELIEF VALVES - STEAM TRAPS - CLEAN STEAM PRODUCTS  
LIQUID DRAINERS - PRESSURE PUMPS - EJECTORS - SPECIALTY PRODUCTS**



PP-117  
1/01

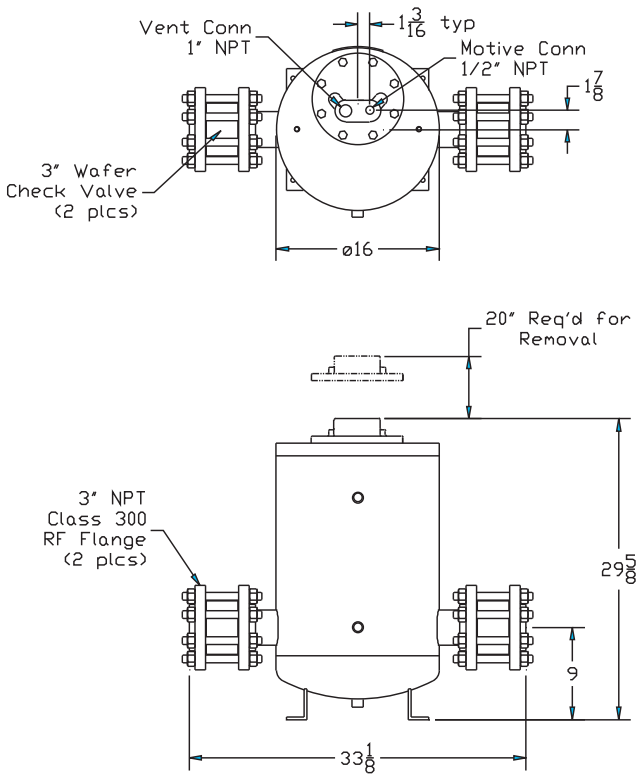
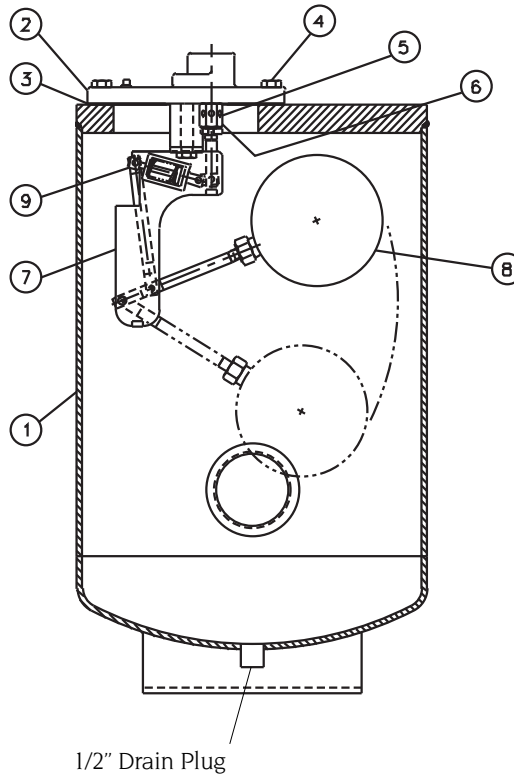
# Series PMPHP Pressure Motive Pump Specifications

## Pressure & Temperature Ratings:

PMPHP - S.S. Checks.....210 psig (PMA) @ 650° F (TMA)

## Max. Operating Conditions:

PMPHP - S.S. Checks.....200 psig (PMO) @ 600° F (TMO)



## Materials

- 1) Body ..... Carbon Steel
- 2) Cover..... Steel
- 3) Cover Gasket..... Non Asbestos
- 4) Cover Bolts..... Steel
- 5) Inlet Valve..... 17-4 PH S.S.
- 6) Vent Valve..... 17-4 PH S.S.
- 7) Mechanism Yoke..... 304 S.S.
- 8) Ball Float ..... 304 S.S.
- 9) Springs. .... Inconel
- 10) Other Internal Comp. .... S.S.
- 11) Check Valves. .... S.S.

## Weight

PMPHP.....270 lbs.