



All Stainless Steel Internals  
Rugged Ductile Iron Construction  
In-Line Piping Connections  
Pressures to 225 psig

**Series FTT  
Float and  
Thermostatic  
Steam Traps**

## Applications

Series FTT Steam Traps are designed to freely remove condensate and non-condensables in steam systems. They can be found on:

- Unit & Space Heaters
- Textile Machinery
- Pressing Machines
- Steam Process Equipment
- Steam Main Drip Stations
- Heat Exchangers
- Coils

## Features

- ½" and ¾" sizes
- Capacities to 1100 lbs/hr
- In-Line, straightway connections
- Field configurable to accommodate left-to-right or right-to-left flow.
- In-Line Servicing
- Easy Installation
- Compact & Rugged
- In-Line Maintenance, all parts attached to cover
- Freely Rotating Valve Plug for self sealing and self-cleaning
- All Internals made of stainless steel with hardened valve plug and seat
- Balanced Thermostatic Air Vent with all welded stainless steel bellows
- Bimetal Air Vent optional

## How They Work

As air and condensate enter the trap body, they are removed through separate discharge ports. Air and non-condensables are discharged through the air vent into the separate air bypass build into the trap. The thermostat closes when the temperature surrounding the element is slightly below the temperature of the steam in the system.

As the trap body fills with condensate, the float will rise sufficiently to open the valve seat and discharge the condensate through the trap outlet port. Series FTT Traps are designed to modulate the flow of condensate with the rise and fall of the float as changes in condensate level occur within the trap body.

All working parts of the trap are attached to the cover casting for easy repair access. Designed for in-line servicing, the unit may be inspected and parts replaced without breaking any pipe connections.



Watson McDaniel reserves the right to change the designs and/or materials of its products without notice



## WATSON McDANIEL COMPANY

975 Madison Ave. Valley Forge Corporate Center Norristown, PA 19403  
www.watsonmcdaniel.com 610 666-5711 Fax 610 666-0404

Manufacturers of:

**PRESSURE & TEMPERATURE REGULATORS - RELIEF VALVES - STEAM TRAPS - CLEAN STEAM PRODUCTS  
LIQUID DRAINERS - PRESSURE PUMPS - EJECTORS - SPECIALTY PRODUCTS**



ST-456  
1/01

## Series FTT Capacities

Pressure Differential (psi)	Capacities (lb/hr)		
	PMO (psig)		
	65	145	225
0.25	115	55	40
0.5	155	75	50
1.0	205	100	70
2.0	270	135	95
5.0	390	200	135
10	520	270	185
15	610	320	220
20	685	365	245
30	810	435	290
40	910	490	330
50	995	540	360
65	1110	600	405
75		640	430
100		725	485
125		795	530
145		850	565
150			575
200			645
225			680

Pressure Differential (bar)	Capacities (kg/hr)		
	PMO (bar)		
	4.5	10.0	15.5
0.02	55	22	19
0.05	80	33	28
0.10	105	44	38
0.20	140	60	50
0.50	205	90	75
1.0	270	120	100
1.5	320	140	115
2.0	360	160	130
2.5	395	175	145
3.0	425	190	155
3.5	450	205	165
4.0	480	215	175
4.5	500	225	185
5.0		235	195
6.0		255	210
8.0		290	235
10.0		320	255
12.0			275
15.5			310

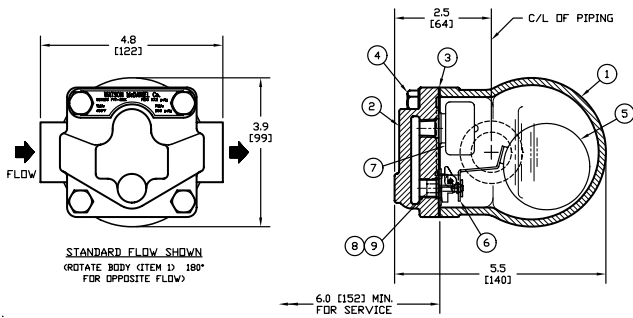
### Materials

- 1 Body .....Ductile Iron
- 2 Cover .....Ductile Iron
- 3 Gasket .....Garlok 3400
- 4 Cover Screws .....Steel, GR 5
- 5 Float .....304 S.S.
- 6 Internals .....300 Series S.S.
- 7 Thermostat.....S.S.
- 8 Valve Seat.....17-4 PH S.S.
- 9 Valve Disc.....420F S.S.

**Maximum Operating Temperature:**  
Saturated Steam Temperature

**Maximum Allowable Pressure (PMA):** 250 psig (17.2 barg)

**Maximum Allowable Temperature (TMA):** 450°F (232°C)



Model	FTT-65	FTT-145	FTT-225
PMO	65 psig	145 psig	225 psig
Sizes		1/2" & 3/4"	
Connections	NPT		
Construction	Ductile Iron Body & Covers/S.S. Internals		
Weight	Approx. 6 lbs (2.7 kg)		

