



428 Jones Boulevard Phone: (610)495-5131  
 Limerick Airport Business Center Fax: (610)495-5134  
 Pottstown, PA 19464 www.watsonmcdaniel.com

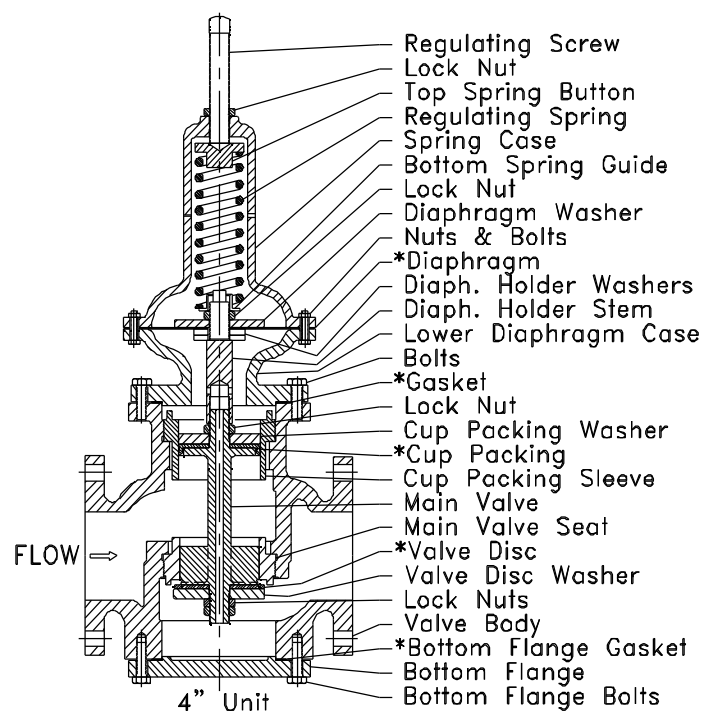
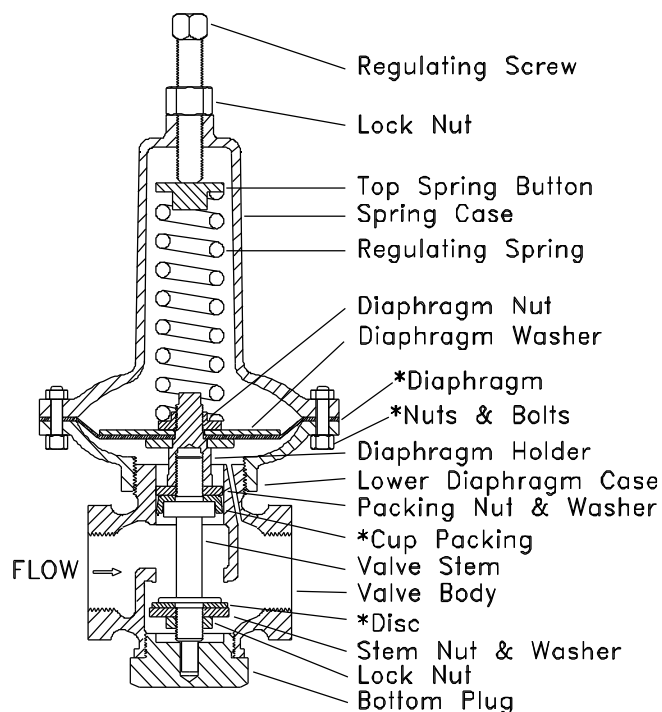
# STYLE B

## REGULATING VALVE

### INSTALLATION INSTRUCTIONS

INSTRUCTION PART NO. 2226700

REVISION 2



## INSTALLATION

\*Recommended Spare Parts

Before installing the pressure regulating valve, be sure to blow out the pipe line, removing all dirt, pipe scale, pipe chips, etc.

Watson McDaniel Company recommends a 'Y' type strainer be placed in the line on the inlet side of the regulating valve.

Install the pressure regulating valve in a straight run of pipe away from any meters, tees, elbows or flow turbulence that will affect good regulation.

The valve body is marked with an arrow to show direction of flow.

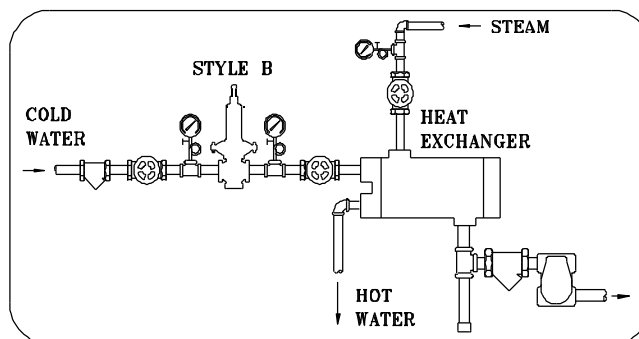
Install the Style B pressure regulating valve in a horizontal run of pipe with the adjusting screw above the center line of pipe. However, if head room is scarce, the second best position is to install the valve in an inverted position with the adjusting screw pointing downward.

(WARNING: The Style B valve should not be installed in a vertical run of pipe because the weight of the parts will interfere with good regulation)

Max. Inlet Pressure	250 PSIG
Min. Inlet Pressure	10 PSIG
Max. Diff. Pressure	125 PSIG
Min. Diff. Pressure	20% of inlet pressure

## OPERATION

On start up, be sure all compression is off the spring by turning the adjusting screw counter-clockwise. Check to see that the bypass valve is closed and isolation valves in front and back of the regulator are open; also that the inlet pressure gauge is reading line pressure and the downstream pressure gauge is reading approximately zero or back pressure. By turning the adjusting screw slowly clockwise, the desired controlled pressure can be obtained. After the desired pressure is reached, the lock-nut on the regulating screw should be tightened to assure holding the set pressure and prevent tampering.



Each Watson McDaniel Company Product is warranted against defects in material and workmanship for one year from date of shipment. This warranty extends to the first retail purchaser only. All defective material must be returned to the person from whom you purchased the Product, transportation prepaid, free of any liens or encumbrances, and if found to be defective will be repaired free of charge or replaced, at the warrantor's or seller's option. If the material is replaced, any replacement will be invoiced in the usual manner and after inspection of alleged defective material an adjustment will be made for depreciation caused by purchaser's use. In no event will Watson McDaniel Company be liable to do more than refund the original contract price. Incidental and consequential damages are excluded, whether under this warranty or otherwise. All implied warranties, including warranties of merchantability and fitness for a particular purpose, are disclaimed and excluded.



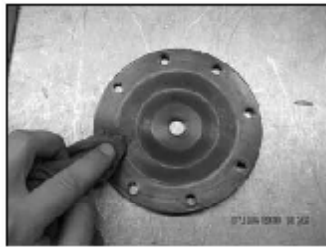
Remove valve from line.



Remove spring case bolting, spring case, spring button & spring.



After removing diaphragm nut & washer, remove dia.



Inspect & clean diaphragm.



Remove lower dia. washer.



Clean sealing surfaces.



Remove lower diaphragm case.



Remove stem/disc assembly.



Clean & inspect stem/disc assembly.



Clean and inspect seat sealing surface in body.



Remove and clean bottom plug.

Reassemble after cleaning all threads and sealing surfaces. Use 'Hi-Temp RTV Silicone Gasket Maker' between stem and diaphragm and teflon paste to seal lower diaphragm case threads. Run a soap bubble test with low pressure air to confirm all seals are good before reinstalling in service.