

NON-ELECTRIC CONDENSATE PUMPS

PMP Series

Pressure Motive Pumps

Watson McDaniel reserves the right to change the designs and/or materials of its products without notice.
©2002 Watson McDaniel Company

Revised 7/2002

TYPICAL APPLICATION

The Watson McDaniel **PMP** Series of **Pressure Motive Pumps** are designed to transfer liquids, normally condensate, without the use of electrical energy. The primary application for the PMP is pumping condensate from a process application or condensate collection area back to the return system.

Hot Condensate The mechanical seals in standard electric condensate return pumps begin to have difficulty when handling condensate in excess of 195° F. Seal failure is virtually guaranteed when condensate temperatures reach 203° F due to flashing of the condensate across the seal face. It is therefore required to cool condensate in order to prevent seal failure prior to pumping using electric pumps. PMPs do not have seals and therefore will handle condensate well in excess of these temperatures.

Several choices of pump body materials, types and configurations are available to meet specific customer applications:

Ductile Iron Tanks Ductile Iron is far superior to cast iron in handling higher pressures and temperatures. Ductile iron is also extremely corrosive resistant to condensate and water and can last in excess of 50 years before tank replacement is required. Our ductile iron tanks can be ASME coded on request.

Fabricated Carbon Steel Carbon steel has a higher pressure and temperature rating than ductile iron. Certain industrial facilities such as chemical and petrol chemical refineries request carbon steel only. Our carbon steel tanks come standard ASME coded.

Fabricated Stainless Steel Stainless steel (304L) tanks are the most corrosive resistant and can be used in extremely harsh environments.

Low Profile Low profile tanks are often required when draining condensate from process equipment when positioned close to the ground which limits filling head. Low profile units are available in both fabricated steel and cast iron.

Sump Drainers Sump drainers are similar to the standard PMP models except that they discharge the condensate vertically upwards. This piping configuration allows them to be easily fit into below ground sump pits with limited space.

High Pressure Standard units have a maximum discharge pressure of 150 psig. High pressure (PMPHP) units can discharge condensate up to 200 psig and are used for returning condensate against systems with high back pressure.

TYPICAL CONFIGURATIONS

Stand-Alone: PMP pump unit with inlet and outlet check valves.

Simplex: One Pumping unit with check valves and receiver tank, mounted on frame and skid base.

Duplex: Two Pumping units with check valves and receiver tank, mounted on frame and skid base..

Triplex: Three Pumping units with check valves and receiver tank, mounted on frame and skid base.

Quadraplex: Four Pumping units with check valves and receiver tank, mounted on frame and skid base.

CUSTOM CONFIGURATIONS

Watson McDaniel's fully-qualified fabrication facility is ASME code certified. Our engineers can design and build complete custom systems to meet all your requirements.

FEATURES

- **Seal-less** – The PMP contains no seals. The weak point in conventional electric pumps is seal failure due to flashing hot condensate across the seal face.
- **Non-Electric** – Since no electricity is required they can be used in remote locations or NEMA 4, 7 & 9 hazardous areas. Can operate using steam, air, nitrogen or other pressurized gases as the motive force.
- **Ductile-Iron** – Pump tanks are standard in Ductile-Iron which is far superior to Cast-Iron for pressure and temperature rating and safety. Can be ASME coded and can last in excess of fifty years prior to replacement.
- **Carbon Steel** – Pump tanks available in ASME coded carbon steel.
- **Stainless Steel** – Pump tank options include 304L for applications in harsh environments.

OPTIONS

- Cycle counter for measuring the amount of condensate flow through the pump.
- Insulation jackets are available to stop radiation loses through the pump body and provide personal protection.
- Sight glass for monitoring liquid level inside pump body.
- ASME code-certified fabrication facility for the design and manufacture of customized systems.

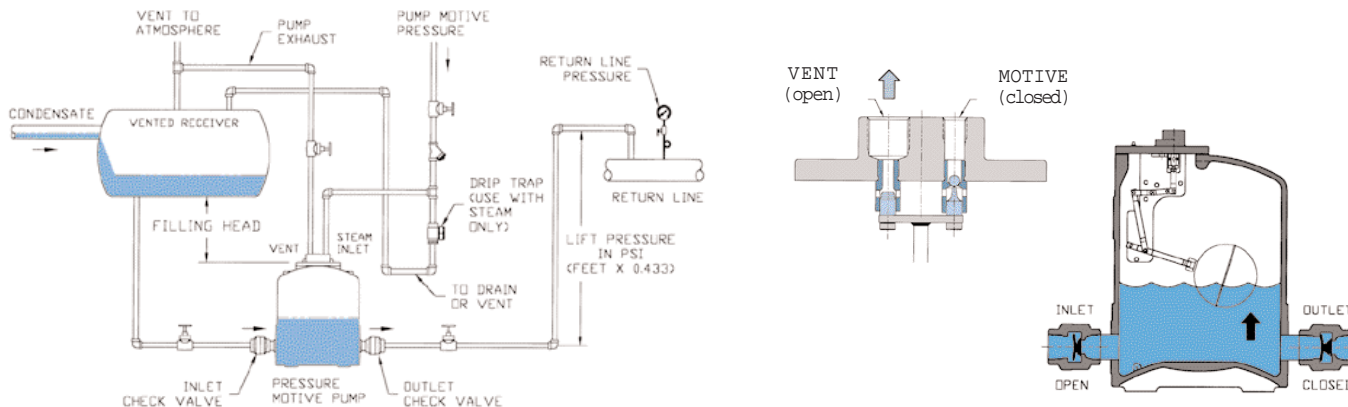
NON-ELECTRIC CONDENSATE PUMPS

PMP Series

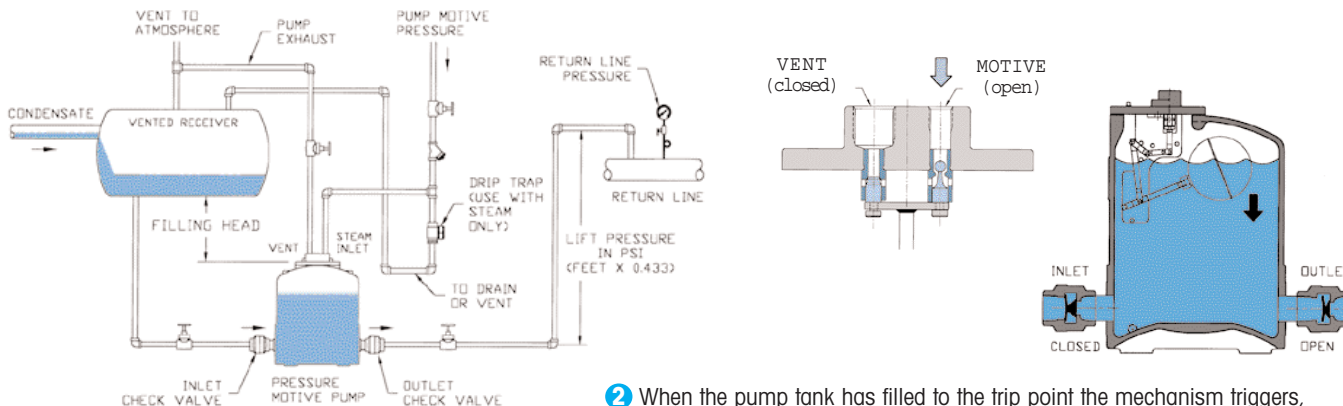
Pressure Motive Pumps

Function of PMP Pressure Motive Pump

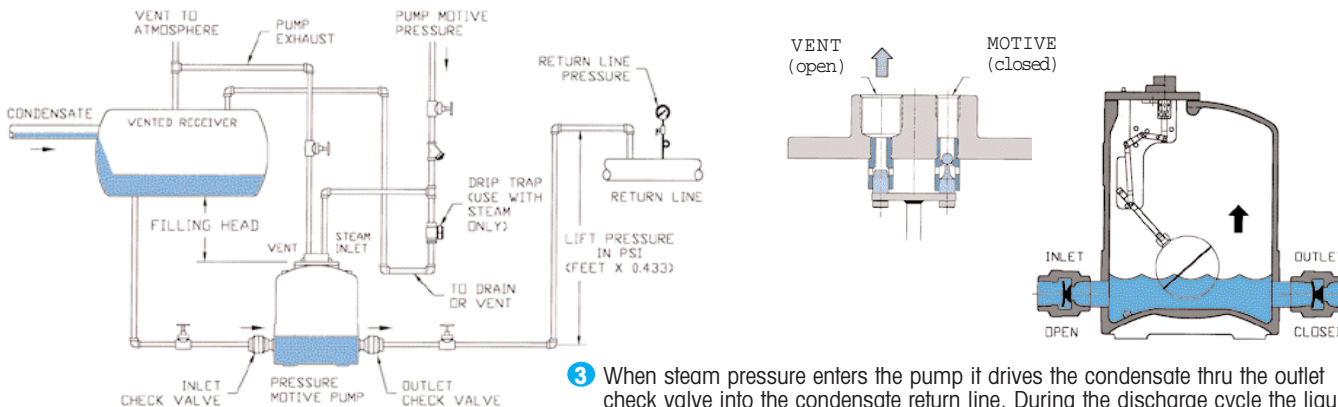
PUMPS



1 Condensate flows from the receiver tank thru the inlet check valve and fills the pump tank. During the filling cycle the float inside the tank rises.



2 When the pump tank has filled to the trip point the mechanism triggers, opening the steam inlet valve and simultaneously closes the vent valve. This allows motive pressure to enter the pump body.



3 When steam pressure enters the pump it drives the condensate thru the outlet check valve into the condensate return line. During the discharge cycle the liquid and the float inside the pump tank drops. At the lower trip point the mechanism triggers and the steam inlet valve to the pump tank closes and simultaneously the vent valve opens. The fill and discharge cycle then repeats itself.

NON-ELECTRIC CONDENSATE PUMPS

PMP Series

Pressure Motive Pumps

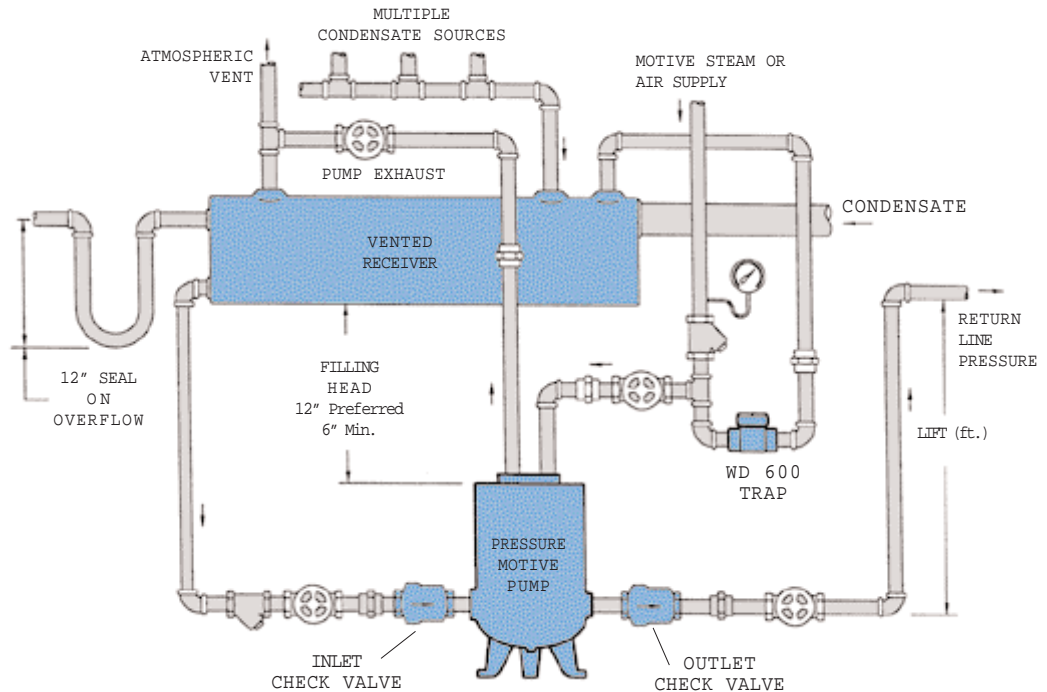
Watson McDaniel reserves the right to change the designs and/or materials of its products without notice.
©2002 Watson McDaniel Company

Revised 7/2002

Open Loop System (Vented Receiver)

TYPICAL INSTALLATIONS

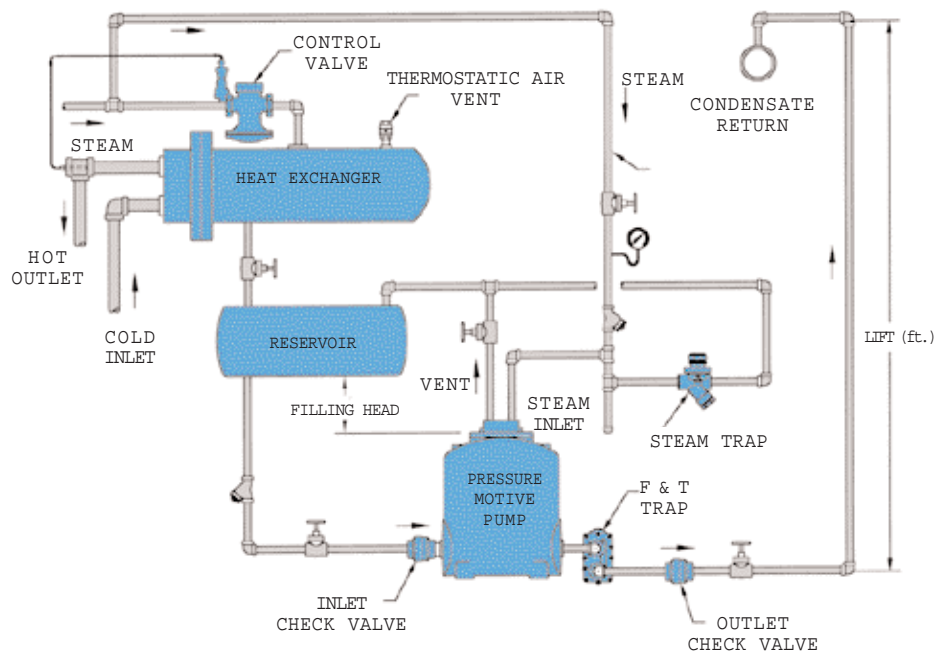
When utilizing a PMP Series Pump in an "open-loop" system a receiver tank that is vented to atmosphere must be installed above the pump to provide enough hydraulic head to move the condensate into the pump since it has lost all its pressure to atmosphere along with the flash steam. This is particularly necessary when there are multiple condensate sources at very different pressures dumping into a common receiver. The receiver venter to atmosphere equalizes the discharge pressure of all the steam traps thus preventing a higher pressure trap discharge from stalling a lower pressure trap.



Closed Loop System (Pressurized Reservoir)

TYPICAL INSTALLATIONS

When utilizing a PMP Series Pump in an "closed-loop" system a reservoir tank that is not vented to atmosphere must be installed above the pump to provide a hydraulic head and a holding area for the condensate when the pump is in its discharge cycle. The "closed-loop" system is employed to drain a single piece of heat-transfer equipment where the venting of flash steam is not desired or when the condensate return pressure exceeds the steam pressure inside the equipment. This causes the common steam trap system to stall and back condensate up into the equipment.



NON-ELECTRIC CONDENSATE PUMPS

PMP Series

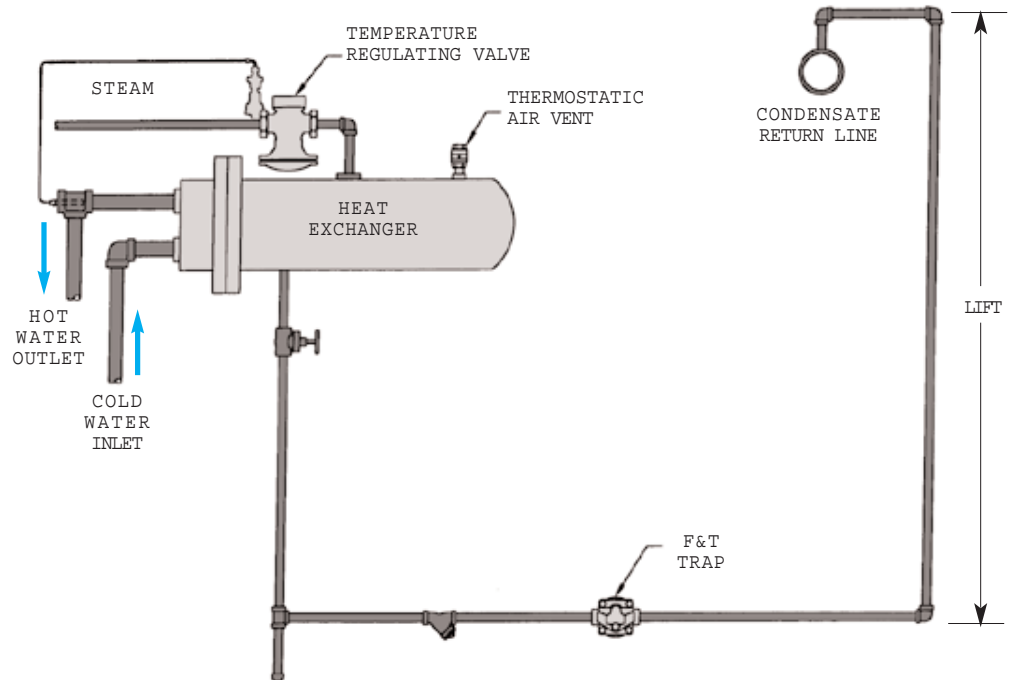
Pressure Motive Pumps

Problem: Stalled Heat Exchanger

DESCRIPTION

STALL CONDITION WITH MODULATED STEAM FLOW.

Steam flowing into the heat exchanger is controlled by the temperature regulating valve. When the temperature regulating valve is fully open, any condensate forming inside the heat exchangers will be pushed through the steam trap into the condensate return line. When the temperature regulating valve partially or fully closes the steam pressure inside the heat exchangers can no longer overcome the back pressures and the condensate will build up in the heat exchanger. This condition is called system stall and results in water hammer and poor heat transfer due to the condensate build-up in the heat exchanger.

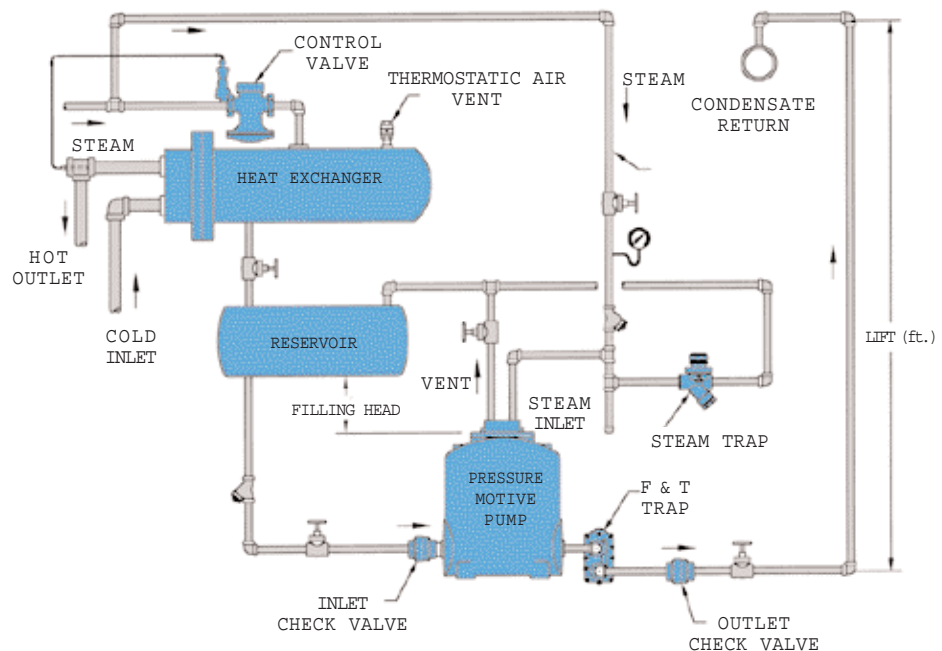


Solution:

DESCRIPTION:

USE A PRESSURE MOTIVE PUMP AS SHOWN

When the temperature regulating valve is fully open, any condensate forming inside the heat exchangers will be pushed through the pump and steam trap into condensate return line. When the temperature regulating valve closes, any condensate forming inside the heat exchanger will drain by gravity into the pump tank. When the level inside the pump tank reaches the trip point, high pressure steam will drive the condensate from the tank into the condensate return line. **Note:** A larger steam trap must be used to handle pump discharge.



NON-ELECTRIC CONDENSATE PUMPS

PMP Series

Pressure Motive Pumps

Watson McDaniel reserves the right to change the designs and/or materials of its products without notice.
©2002 Watson McDaniel Company

Revised 7/2002

The following models of the PMP Series all have identical internal mechanism. The only difference between each model is the body and cover material.

PMPC



DUCTILE IRON

PMPF



CARBON STEEL

PMPSS



STAINLESS STEEL

PMPHP



HIGH PRESSURE

PMPLS



LOW PROFILE

TYPICAL APPLICATIONS

The Watson McDaniel **PMP Series** Pressure Motive Pumps are designed to transfer liquids, normally condensate without the use of electrical energy. The primary application for the PMP is pumping condensate from a process application or condensate collection area back to the return system.

PUMP FEATURES

- **Seal-less** – The PMP contains no seals. The weak point in conventional electric pumps is seal failure due to flashing hot condensate across the seal face.
- **Non-Electric** – Since no electricity is required they can be used in remote locations or NEMA 4, 7 & 9 hazardous areas. Can operate using steam, air, nitrogen or other pressurized gases as the motive force.
- **Ductile-Iron** – Pump tanks are standard in Ductile-Iron which is far superior to Cast-Iron for pressure and temperature rating and safety. Can be ASME coded and can last in excess of fifty years prior to replacement.
- **Carbon Steel** – Pumps tanks available in ASME coded carbon steel.
- **Stainless Steel** – Pumps tank options include 304L for applications in harsh environments.

PMPC

The Model **PMPC** pressure motive pump body & cover are manufactured from ductile iron. **ASME "UM" code stamp available.**

PMPF

The Model **PMPF** pressure motive pump body & cover are manufactured from carbon steel. These tanks are fabricated with 1/8" corrosion allowance and receive the **ASME "UM" code stamped.**

PMPSS

The Model **PMPSS** pressure motive pump body & cover are manufactured from 304L stainless steel. These tanks are designed to be used in harsh corrosive environments.

PMPHP

The Model **PMPHP** pressure motive pump is designed for high pressure applications. Pump body & cover are manufactured from carbon steel and are **ASME "UM" code stamped.**

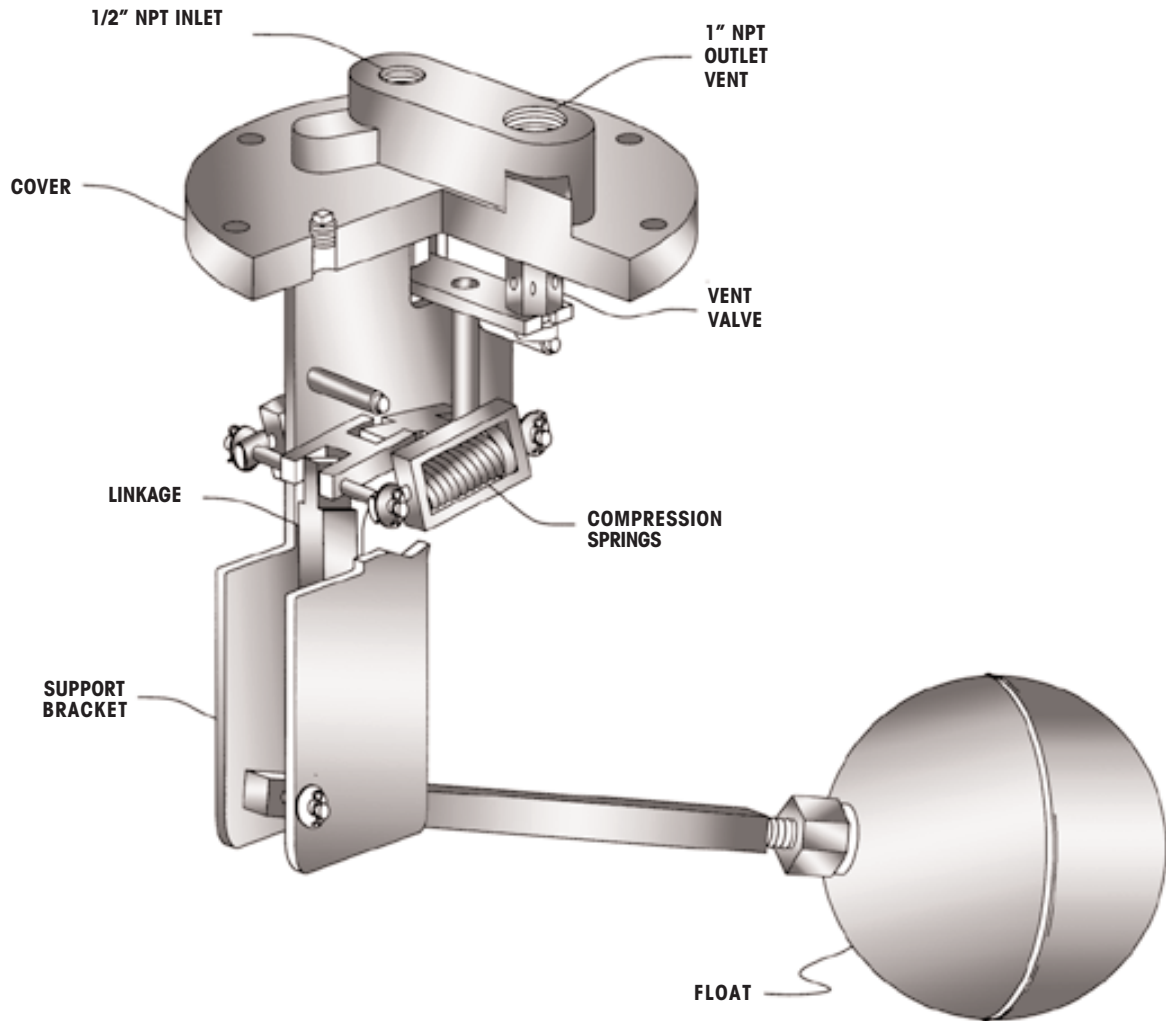
PMPLS

The Model **PMPLS** pressure motive pumps are low profile. These tanks are often required when draining condensate from process equipment positioned close to the ground which limits the filling head of the pump. Pump body & cover are manufactured from carbon steel and are **ASME "UM" code stamped.**

NON-ELECTRIC CONDENSATE PUMPS

PMP Series

Pressure Motive Pumps



PUMPS

INTERNAL MECHANISM MATERIALS

Cover	Material for cover same as tank material
Cover Gasket	Garlock / Grafoil
Cover Bolts	Grade B5
Inlet Valve	Hardened Stainless Steel, Rc 40
Vent Valve	Hardened Stainless Steel, Rc 40
Mechanism Yoke	304 Stainless Steel
Ball Float	Stainless Steel
Springs	Inconel-X-750
Other Internal Comp	Stainless Steel

INTERNAL MECHANISM FEATURES

- All mechanism components are stainless steel
- All wear points are made from hardened stainless
- Inlet and vent valve heat treated 17-4 stainless
- Dual springs in compression. Springs were designed to minimize stresses and last indefinitely
- Spring material Inconel-X-750. Specifically chosen for high-temperature corrosive service
- Precision manufactured mechanism requires no adjustment

NON-ELECTRIC CONDENSATE PUMPS

PMP Series

Pressure Motive Pumps

Watson McDaniel reserves the right to change the designs and/or materials of its products without notice.
©2002 Watson McDaniel Company

Revised 7/2002

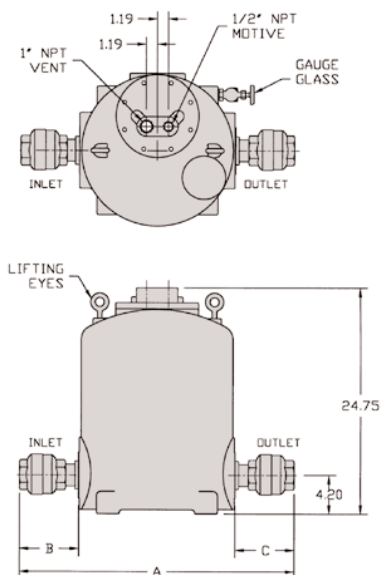
PMPC



Model	PMPC
Body	Ductile Iron
Cover	Ductile Iron
Check Valves	Stainless Steel
PMO Max. Operating Pressure	150 PSIG
TMO Max. Operating Temperature	366°F
PMA Max. Allowable Pressure	150 PSIG @ 470°F
TMA Max. Allowable Temperature	470°F @ 150 PSIG

DESCRIPTION

The Model **PMPC** pressure motive pump body & cover is manufactured from ductile iron. **ASME "UM" code stamp available.**



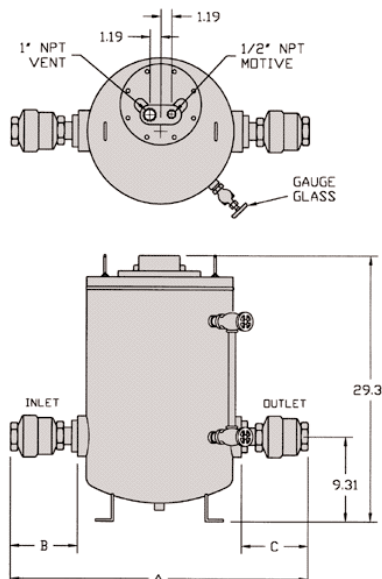
PMPF



Model	PMPF
Body	Carbon Steel
Cover	Carbon Steel
Check Valves	Stainless Steel
PMO Max. Operating Pressure	150 PSIG
TMO Max. Operating Temperature	366°F
PMA Max. Allowable Pressure	150 PSIG @ 470°F

DESCRIPTION

The Model **PMPF** pressure motive pump body & cover is manufactured from carbon steel. These tanks are fabricated with 1/8" corrosion allowance and receive the **ASME "UM" code stamp**.



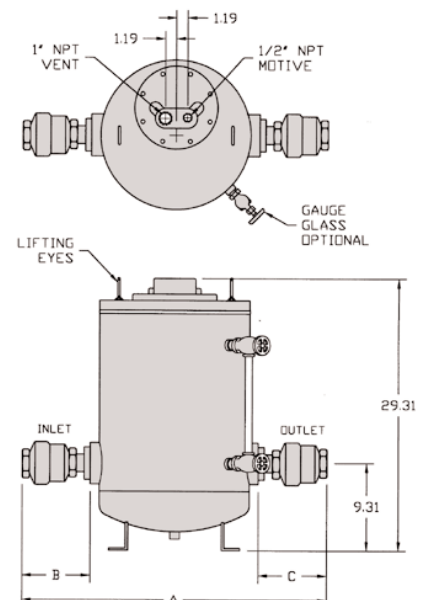
PMPSS



Model	PMPSS
Body	304L SS
Cover	304L SS
Check Valves	Stainless Steel
PMO Max. Operating Pressure	150 PSIG
TMO Max. Operating Temperature	366°F
PMA Max. Allowable Pressure	150 PSIG @ 470°F

DESCRIPTION

The Model **PMPSS** pressure motive pump body & cover is manufactured from 304L stainless steel. These tanks are designed to be used in harsh corrosive environments.



NON-ELECTRIC CONDENSATE PUMPS

PMP Series

Pressure Motive Pumps

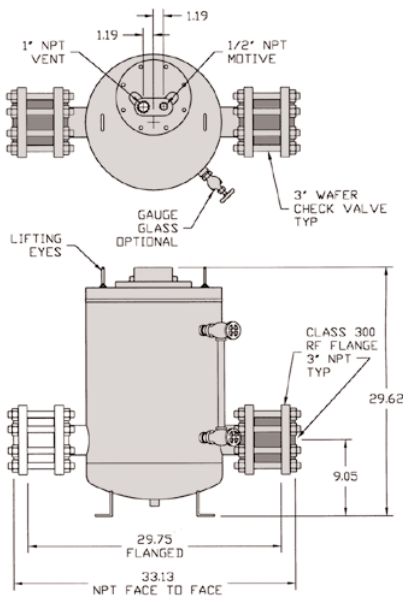
PMPHP



Model	PMPHP
Body	Carbon Steel
Cover	Carbon Steel
Check Valves	Stainless Steel
PMO Max. Operating Pressure	200 PSIG
TMO Max. Operating Temperature	600°F
PMA Max. Allowable Pressure	210 PSIG @ 650 °F

DESCRIPTION

The Model **PMPHP** pressure motive pump is designed for **high pressure** applications. Pump body & cover are manufactured from **carbon steel** and are **ASME "UM" code stamped**.



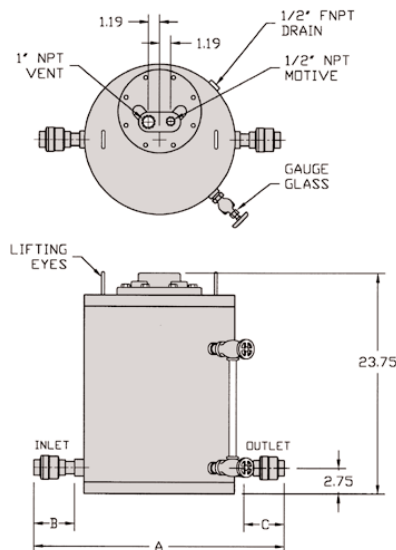
PMPLS



Model	PMPLS
Body	Carbon Steel
Cover	Carbon Steel
Check Valves	Stainless Steel
PMO Max. Operating Pressure	150 PSIG
TMO Max. Operating Temperature	366°F
PMA Max. Allowable Pressure	150 PSIG @ 470°F

DESCRIPTION

The Model **PMPLS** pressure motive pumps are **low profile**. These tanks are often required when draining condensate from process equipment that are positioned close to the ground which limits the filling head of the pump. Pump body & cover are manufactured from **carbon steel** and are **ASME "UM" code stamped**.



DIMENSIONS — inches/pounds

Size Inlet x Outlet	A	B	C	Weight (lbs)
PMPC				
1" x 1"	29-1/2	6	6	360
1-1/2" x 1"	30-3/4	7-1/2	6	365
2" x 1"	31	8	6	370
2" x 1-1/2"	32-1/2	8	7-1/2	380
2" x 2"	32-3/4	8	8	385
3" x 2"	35-1/4	9-1/4	8	390
PMPF				
1" x 1"	30-1/2	6	6	215
1-1/2" x 1"	31-3/4	7-1/2	6	220
2" x 1"	32	8	6	225
2" x 1-1/2"	33-1/2	8	7-1/2	330
2" x 2"	33-3/4	8	8	335
3" x 2"	35-1/4	9-1/4	8	340
PMPSS				
1" x 1"	30-1/2	6	6	215
1-1/2" x 1"	31-3/4	7-1/2	6	220
2" x 1"	32	8	6	225
2" x 1-1/2"	33-1/2	8	7-1/2	230
2" x 2"	33-3/4	8	8	235
3" x 2"	35-1/4	9-1/4	8	340
PMPHP				
1" x 1"	29-1/2	6	6	320
1-1/2" x 1"	30-3/4	7-1/2	6	325
2" x 1"	31	8	6	330
2" x 1-1/2"	32-1/2	8	7-1/2	335
2" x 2"	32-3/4	8	8	340
3" x 2"	29-1/4	4-1/2	8	345
PMPLS				
1" x 1"	29-1/2	5-5/8	5-5/8	200
1-1/2" x 1"	30-3/4	7	5-5/8	205
1-1/2" x 1-1/2"	32-1/8	7	7	210