

# SPECIALTY PRODUCTS

## AV2000C/2100C

### Thermostatic Air Vent

Watson McDaniel reserves the right to change the designs and/or materials of its products without notice.  
©2002 Watson McDaniel Company

Revised 7/2002

Model	AV2000C	AV2100C
Sizes	1/2", 3/4"	1/2", 3/4"
Connections	NPT	NPT
Body Material	Stainless Steel	Stainless Steel
PMO Max. Operating Pressure	300 PSIG	650 PSIG
TMO Max. Operating Temperature	Saturated Steam Temp.	Saturated Steam Temp.
PMA Max. Allowable Pressure	1032 PSIG @ 100°F	1032 PSIG @ 100°F
TMA Max. Allowable Temperature	750°F @ 800 PSIG	750°F @ 800 PSIG



### TYPICAL APPLICATION

The **AV2000C** & **AV2100C** are used on industrial steam applications up to 650 psig for the removal of air and non-condensable gases from process equipment, vessels and piping.

### HOW IT WORKS

The thermostatic air vent contains a welded stainless steel thermal element that expands when heated and contracts when cooled. When air and non-condensable gases are present, the valve is in the open discharge position. When steam reaches the air vent the element expands and closes valve off tightly.

### FEATURES

- Welded stainless steel thermal element
- Hardened stainless steel seat and disc for extended service life
- Excellent air handling capability for fast start up
- Integral strainer to protect from contamination
- Steam pressures up to 650 psig

### SAMPLE SPECIFICATION

Air Vent shall have a thermal element operation with a seal-welded tamper-proof stainless steel construction. All internals shall be stainless steel featuring an integral strainer and hardened seating system.

### INSTALLATION

The air vent should be located at a high point in the system or vessel. The air vent can be installed in any orientation. The discharge of this unit should be piped to a safe location. Isolation valves should be installed for maintenance purposes.

### MAINTENANCE

Dirt is the most common cause of premature failure; therefore, the air vent should be periodically inspected and cleaned. For full maintenance details, see Installation and Maintenance Manual.

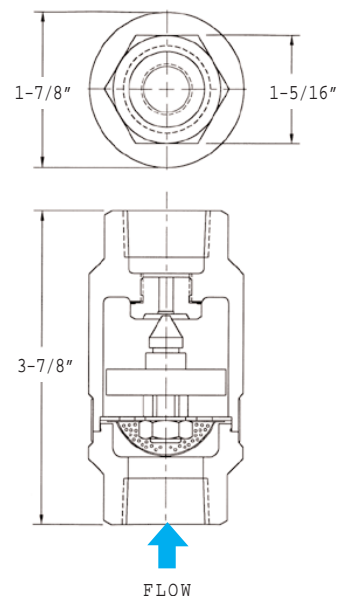
### MATERIALS

Trap Housing	Stainless Steel, ASTM A351-CF3
Thermal Element	Stainless Steel
Valve & Seat	Hardened Stainless Steel, 40 Rc
Strainer Screen, .033" perf.	Stainless Steel

### HOW TO ORDER

Specify model, pipe size and orifice size. If orifice size is not specified, the standard 5/16" diameter will be used.

### DIMENSIONS



### AIR CAPACITIES – (scfm)

Model	Orifice	PMO PSI	Inlet Pressure (PSIG)																	
			2	5	10	25	50	100	125	150	200	250	300	350	400	450	500	550	600	650
AV2001C	3/16"	300	5.2	6.2	7.7	12.4	20.2	35.9	43.9	51.5	67.2	82.8	98.5	-	-	-	-	-	-	-
AV2003C	5/16"	300	10.7	12.6	15.8	25.4	41.4	73.3	89.4	105	137	169	201	-	-	-	-	-	-	-
AV2101C	3/16"	650	5.2	6.2	7.7	12.4	20.2	35.9	43.9	51.5	67.2	82.8	98.5	114	130	145	161	177	192	208
AV2103C	5/16"	650	10.7	12.6	15.8	25.4	41.4	73.3	89.4	105	137	169	201	233	265	297	329	361	393	425