

HOW IT WORKS

The AV 2000 Air Vent is designed for use on steam systems to remove air and noncondensable gases. On start up the Valve (3) is full open ensuring excellent venting characteristics allowing maximum heat transfer.

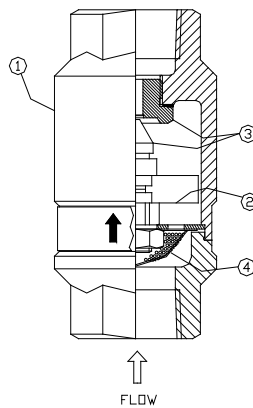
MAX. OPERATING CONDITIONS

PMO 650 PSIG
TMO Saturated Steam Temp.
PMA 1032 PSIG @ 100°F
TMA 750°F @ 800 PSIG

MATERIALS

1. Body . . . Stainless Steel, ASTM A351-CF3
2. Thermal Element Stainless Steel
3. Valve & Seat . . Stainless Steel, AISI 416
4. Strainer ScreenStainless Steel

2219800 Rev A
C.R.3794 2/4/16



SERIES AV2000 THERMOSTATIC AIR VENT

INSTALLATION INSTRUCTIONS

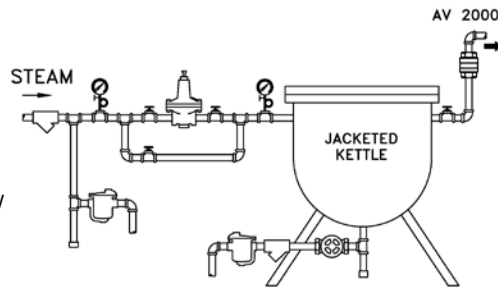
1. The Air Vent should be mounted vertically at the highest point of the piping system or equipment where air collects. The outlet should be piped to a safe place.

2. Before installing the air vent, blow out piping thoroughly to remove loose scale and dirt. Use pipe dope or teflon tape sparingly when attaching the air vent to the pipe. Observe the pressure limitations shown on the label.

3. Discharge piping should be amply sized to avoid excessive back pressure.



428 Jones Boulevard Phone: (610)495-5131
Limerick Airport Business Center Fax: (610)495-5134
Pottstown, PA 19464 www.watsonmcdaniel.com



TYPICAL APPLICATION

For more detailed installation instruction, see full service manual online at watsonmcdaniel.com or call the factory at 610-495-5131.